



Network Camera

QUICK SETUP GUIDE

PRECAUTIONS

Fully understand this document before using this device, and strictly observe rules in this document. If you install this device in public places, provide the tip "You have entered an area under electronic surveillance" in an eye-catching place. Failure to correctly use electrical products may cause fire and severe injuries.

	Warnings It alerts you to moderate dangers which, if not avoided, may cause minor or moderate injuries.
	Caution It alerts you to risks. Neglect of these risks may cause device damage, data loss, device performance deterioration, or unpredictable results.

WARNINGS

- Strictly observe installation requirements when installing the device. The manufacturer shall not be held responsible for device damage caused by users' non-conformance to these requirements.
- Strictly conform to local electrical safety standards and use power adapters that are marked with the BIS standard when installing and using this device. Otherwise, this device may be damaged.
- Use accessories delivered with this device. The voltage must meet input voltage requirements for this device.
- If this device is installed in places with unsteady voltage, ground this device to discharge high energy such as electrical surges to prevent the power supply from burning out.

• When this device is in use, ensure that no water or any liquid flows into the device. If water or liquid unexpectedly flows into the device, immediately power off the device and disconnect all cables (such as power cables and network cables) from this device.

• Do not focus strong light (such as flash lights or sunlight) on this device. Otherwise, the service life of the image sensor may be shortened.

• If this device is installed in places where thunder and lightning frequently occur, ground the device nearby to discharge high energy such as thunder strikes to prevent device damage.

CAUTION

• Do not place heavy objects on the device and avoid intensive shakes and soaking to prevent damage during transportation and storage. The warranty does not cover any device damage that is caused during re-packaging or transportation after the original packaging is taken apart.

• Protect this device from falling and keep the device away from magnetic field interference. Do not install the device in places with shaking surfaces.

• Clean the device with a soft dry cloth. For stubborn dirt, dip the cloth into slight neutral cleanser, gently wipe the dirt with the cloth, and then dry the device.

• Do not jam the ventilation opening. Follow the instructions provided in this document when installing the device.

• Keep the device away from heat sources such as radiators, electric heaters, or other heat equipment.

• Keep the device away from moist, dusty, extremely hot, or cold places, or places with strong electric radiation.

• Before unpacking, check whether the fragile sticker is damaged. If it is damaged, contact customer services or sales personnel. The manufacturer shall not be held responsible for any artificial damage of the sticker.

SPECIAL INSTRUCTIONS

• All complete products sold by the manufacturer are delivered along with name plates, a quick setup guide and accessories after strict inspection. The manufacturer shall not be held responsible for counterfeit products.

• The manufacturer will update this manual according to product function enhancement or changes and regularly update the software and hardware described in this manual. Updated information will be added to new versions of this manual without prior notice.

• This manual may contain misprints, technological information that is not accurate enough, or product function and operation that is slightly inconsistent with the actual product.

• This manual is only for reference and does not ensure that the information is totally consistent with the actual product. For consistency, see the actual product.

PACKAGE CONTENTS

Open the package, check the appearance of product for no obvious damage, and confirm the item list for table1 is available.

Table 1 Packing List

Component	Quantity
Screw Set	3 Pair
RJ 45 Cap with Sealing ring	1
Mounting Sticker	1
Quick Setup Guide	1

DEVICE PORTS

Note:

Different devices may have different multi-head cable, please refer to the actual product.

Figure 1 Multi head cable



Table 2 Multi-head Cable description

ID	Core	Description
1	Network Access port or PoE Port	Connects to a standard ethernet cable.
2	Power Supply (DC 12V)	Connects to a 12V (-15%~+10%) direct current (DC) power supply

INSTALLATION

Installation Steps

1. Place the mounting template in the selected location.
2. Drill the 4 holes with a 6 mm drill bit. Insert the wall plugs for concrete walls.
3. Secure the wall bracket to the wall using the 4 screws. Tuck the cable into the slot on the side of the wall bracket.
4. Adjust the camera angle as per the requirement.

Connecting to Power

Power Over Ethernet (PoE): Connect the device to the network using the waterproof cap and sealing ring, and an Ethernet cable rated for outdoor use to ensure water-proof connection. Plug the other end of the ethernet cable to a PoE switch to power the device over Ethernet.

Power through Adapter: Connect the power adapter to the power port. Plug the power adapter into a socket-outlet. It takes approximately 30 seconds to turn on the camera.

QUICK CONFIGURATION

Login

Step 1 Open the web browser, enter the IP address of the camera (default value: 192.168.1.10) in the address box, and press Enter. The login page is displayed. as shown in figure 2.

Step 2 Input the username and password.

Note:

- The default username is admin. Default password is admin123. It is recommended to modify the default password when using the camera for the first time to ensure system security.
- You can change the system display language on the login page.

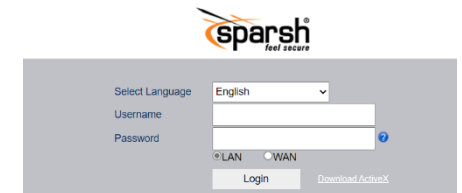


Figure 2 Login

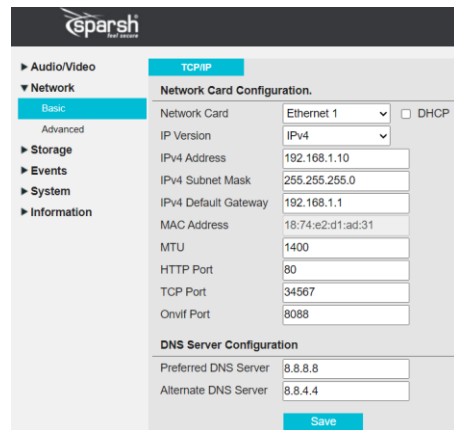
Step 3 Click the Login button, then the main page is displayed.

Modify the IP Address

Choose **Configuration > Network**, the **Local Network** page is displayed.

Enter the IP address in the IP address box and click **Apply** as shown in figure 3. After the success of the IP address settings, please use the new IP address to log in the web interface.

Figure 3 Local Network

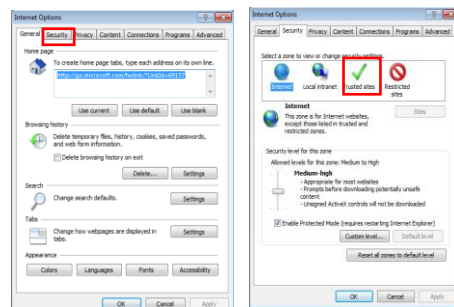


Browsing Video

To ensure the real-time video can be played properly, you must perform the following operation when you log in the web for the first time:

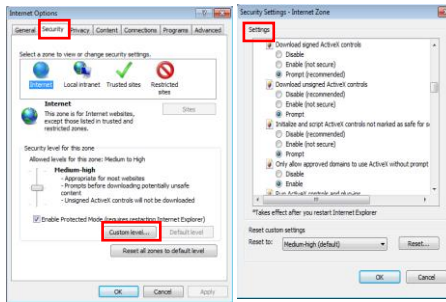
Step 1 In the Internet Explorer, Choose **Tools > Internet options > Security > Trusted sites > Sites**, in the display dialog box, click **Add**, as shown in figure 4.

Figure 4 Adding a Trusted Site



Step 2 In the Internet Explorer, choose **Tool > Internet Options > Security > Custom level**, and set **Download unsigned ActiveX control** and **initialize and script ActiveX controls not marked as safe for scripting under ActiveX controls and plug-ins** to **Enable**, as shown in figure 5.

Figure 5 Configuration ActiveX control and plug in



Step 3 Download and install the player control as prompted.

Note: If the repair tips displayed when installing the control, please ignore the prompt, and continue the installation, the login page is displayed when the control is loaded.

To browse a real-time video, click on preview. Live video page is displayed with options as shown in figure 6.

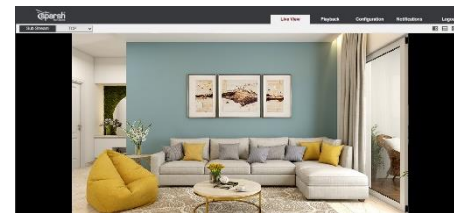


Figure 6 Live Video

Description :

1. Click to turn on the sound, if required.
2. Click in the W:H symbol to modify the aspect ratio of the image. Width and height of the video will be increased or decrease by clicking this.
3. To show the video area in full screen please click symbol .

System Information

To browse device information, choose **Configuration > Information > Version**. Version and system information page is displayed as shown in figure 7.

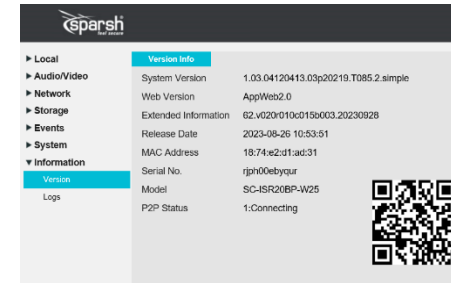
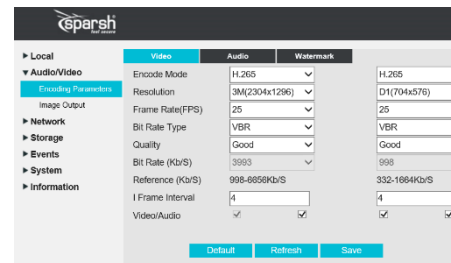


Figure 7 System Info

Stream Configuration

Choose **Configuration > Audio/Video > Encoding Parameters**. The stream page is displayed as shown in the figure 8.

Figure 8 Stream

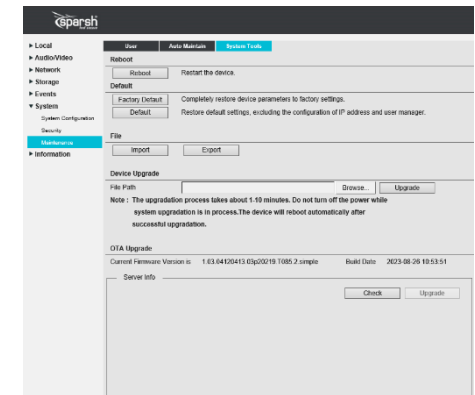


- Set the Parameter according to the page and click on **Save**.
- If the message "Save success!" is displayed, click Confirm. The system saves the settings.
- If the message "save failed!" is displayed, you must apply for the parameter configure permission from an administrator.
- If a message indicating that the "bit rate invalid" is displayed, enter a new bit rate value.

Camera Maintenance

Choose **Configuration > System > Maintenance > System Tool**, the "Camera Maintenance" is displayed, as shown in figure 9. You can restart and restore the camera in this page.

Figure 9 Camera Maintenance



When you click on the reboot option, device is restarted or rebooted successfully.

CAUTION

After you click, all parameters (you can choose whether to reserve the IP address) will be restored to the factory settings. Use this function carefully.